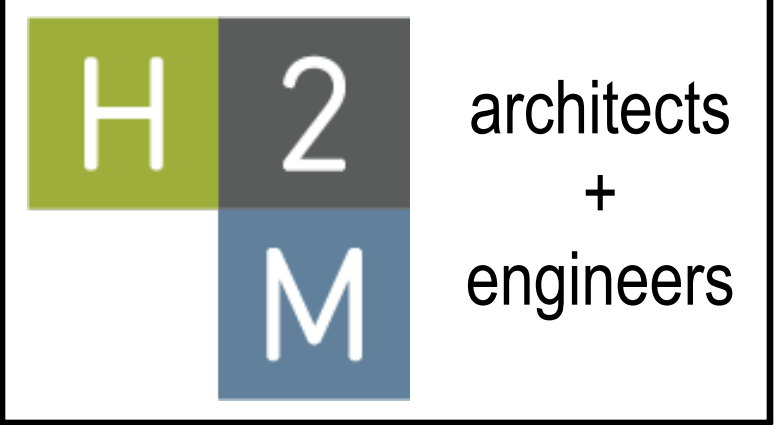
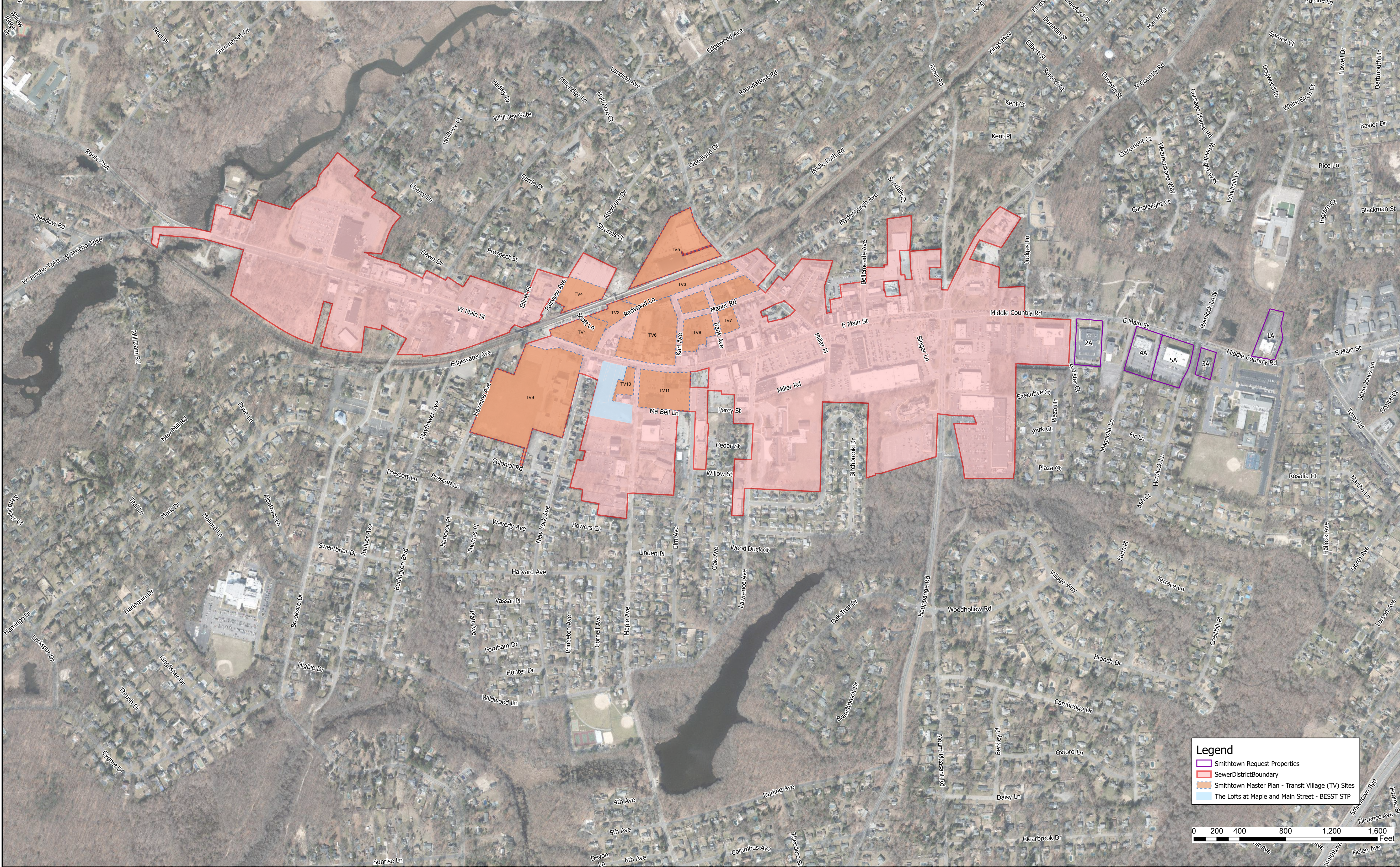


Suffolk County Sewer District No. 6 Smithtown Downtown Sewers	Smithtown Study Area	10 Year Build Out Percent Complete	Total Flow	20 Year Build Out Percent Complete	Total Flow
Current Baseline Wastewater Flow Contributions (GPD)					
Cameron Study Baseline Flow	224,811	100%	224,811	100%	224,811
Total Baseline Sanitary Wastewater Flow	224,811		224,811		224,811
Projected Wastewater Flow Contributions (GPD)					
Cameron Study - New Apartments	129,600	30%	38,880	65%	84,240
Cameron Study - New Restaurants	34,008	40%	13,603	80%	27,206
Cameron Study - New Medical Offices	11,291	35%	3,952	70%	7,904
Cameron Study - Full Build-out of Undeveloped Parcels	55,406	0%	0	0%	0
Cameron Study - Future Development of Lumber Yard	9,000	100%	9,000	100%	9,000
Cameron Study - Development of R-6 Zone	39,150	100%	39,150	100%	39,150
Proposed Projected Average Daily Flow (ADF)	278,455		104,585		167,500
Total Projected Average Daily Flow (ADF)	503,266		329,396		392,311
Additional Future Developments:					
Smithtown Master Plan - Rezoning and Development Sites (Difference)	17,353	50%	8,676	80%	13,882
Village of the Branch Office Buildings	15,896	50%	7,948	80%	12,717
Total Additional Future Developments Proposed Projected Average Daily Flow (ADF)	33,248		8,676		13,882
Total Future Projected Average Daily Flow (ADF)	536,514		338,072		406,193
STP Capacity	600,000		600,000		600,000
% STP Capacity	89.4%		56.3%		67.7%

Smithtown Downtown Sewer Additional of Office Buildings			Existing		Max Buildout	
Address	H2M Parcel ID	Parcel Number	Non-Medical Office Space	Medical Office Space	Non-Medical Office Space	Medical Office Space
285 Middle County Road	1A	0803003000200008002	1287	2146	1287	2146
226 Middle County Road	2A	0803005000100002003	340	567	2041	3402
240 Middle County Road	3A	0803005000100004010	319	531	1913	3188
260 Middle County Road	4A	0803005000100005001	1184	1973	3551	5918
278 Middle County Road	5A	0803005000100006000	124	207	745	1242
Total Flow . . .			3,254	5,424	9,537	15,896

Smithtown Master Plan Development Site Name	Development Site ID	Proposed Zoning	Projected Cameron Study Flow (GPD)	Projected Master Plan Flow (GPD)	Difference
Redwood Ave TV-C	TV-1	TV-C	7,961	7,140	(821)
Redwood Ave TV-TOD	TV-2	TV-TOD	509	4,900	4,391
South of Train Station Redevelopment	TV-3	TV-TOD	11,713	36,390	24,678
Townhouse Development NW of LIRR	TV-4	TV-T	0	5,625	5,625
Townhouse Development North of LIRR	TV-5	TV-T	7,272	7,200	(72)
Main Street Redevelopment	TV-6	TV-C	26,129	34,086	7,957
Bank Avenue Redevelopment	TV-7	TV-C	2,759	2,550	(209)
Karl Avenue Redevelopment	TV-8	TV-C	0	5,865	5,865
NY Ave / Breslin Site	TV-9	TV-C	53,220	28,125	(25,095)
DeCarlo Development	TV-10	TV-C	2,607	8,990	6,383
CVS/ Chase Bank	TV-11	TV-C	12,759	1,410	(11,349)
Total Future Projected Average Daily Flow (ADF)			124,929	142,281	17,353



538 Broad Hollow Road
4th Floor East
Melville, NY 11747
P:(631)756-8000
F:(631)694-4122

Melville, NY 11747
Albany, NY 12205
New York, NY 10001
White Plains, NY 10604
New City, NY 10956
Parsippany, NJ 07054
Howell, NJ 07731

CONSULTANTS:

MARK	DATE	DESCRIPTION

PROJECT #: SUFF 22-02	SEAL
DATE: AUGUST 2022	
DESIGNED BY:	
DRAWN BY:	
CHECKED BY:	
REVIEWED BY:	

CLIENT

**Suffolk County
Department of
Public Works**

Suffolk County Sewer District
No. 6 - Kings Park
Capital Project 8153:
Smithtown - Downtown Sewers

CONTRACT

STATUS

SHEET TITLE

Smithtown Downtown Sewers
Proposed Sewer District Boundary

SHEET #

1 of 1